

WWVMPO/SRTPO

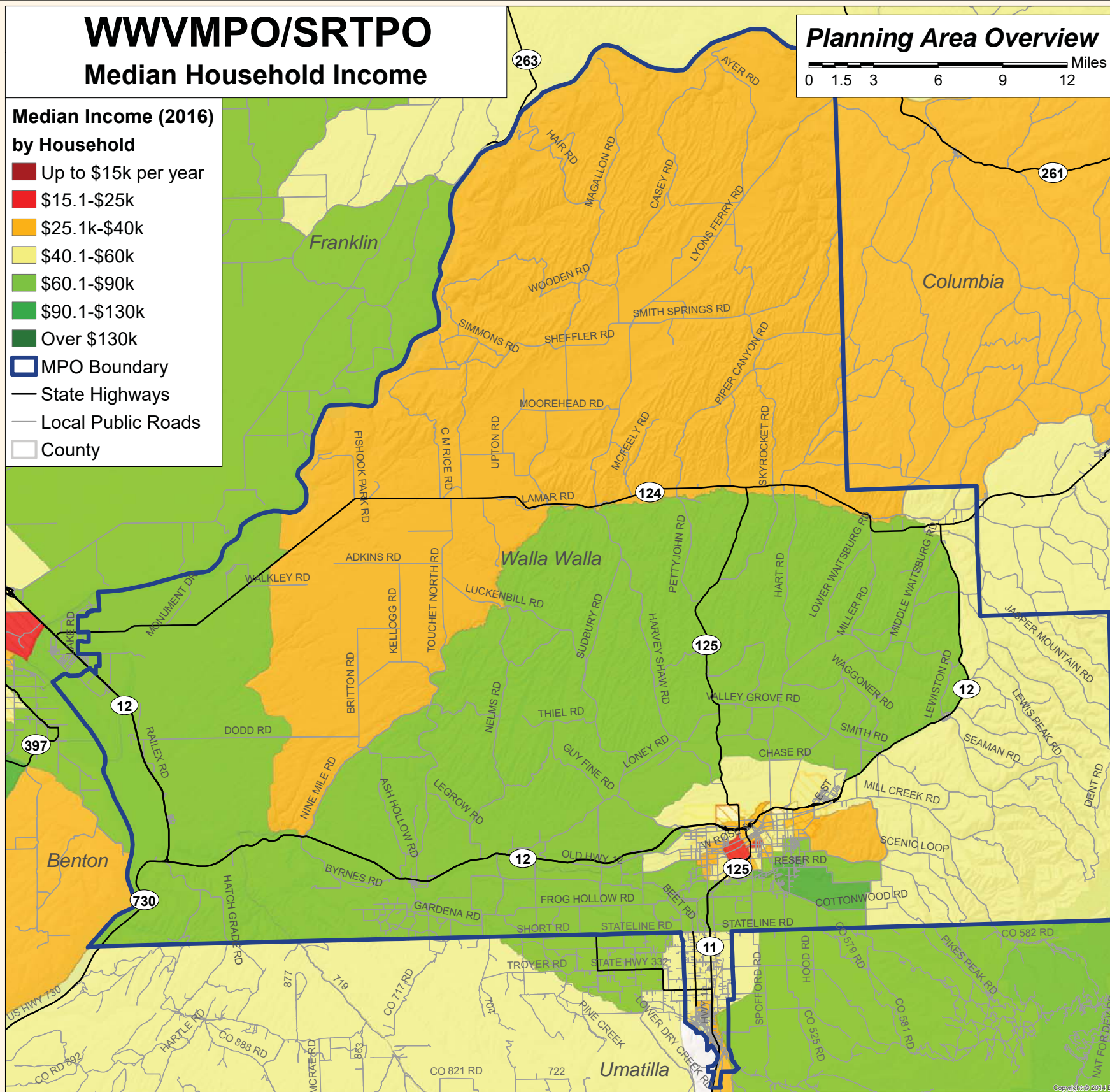
Median Household Income

Median Income (2016)

by Household

- Up to \$15k per year
- \$15.1-\$25k
- \$25.1k-\$40k
- \$40.1-\$60k
- \$60.1-\$90k
- \$90.1-\$130k
- Over \$130k

- MPO Boundary
- State Highways
- Local Public Roads
- County

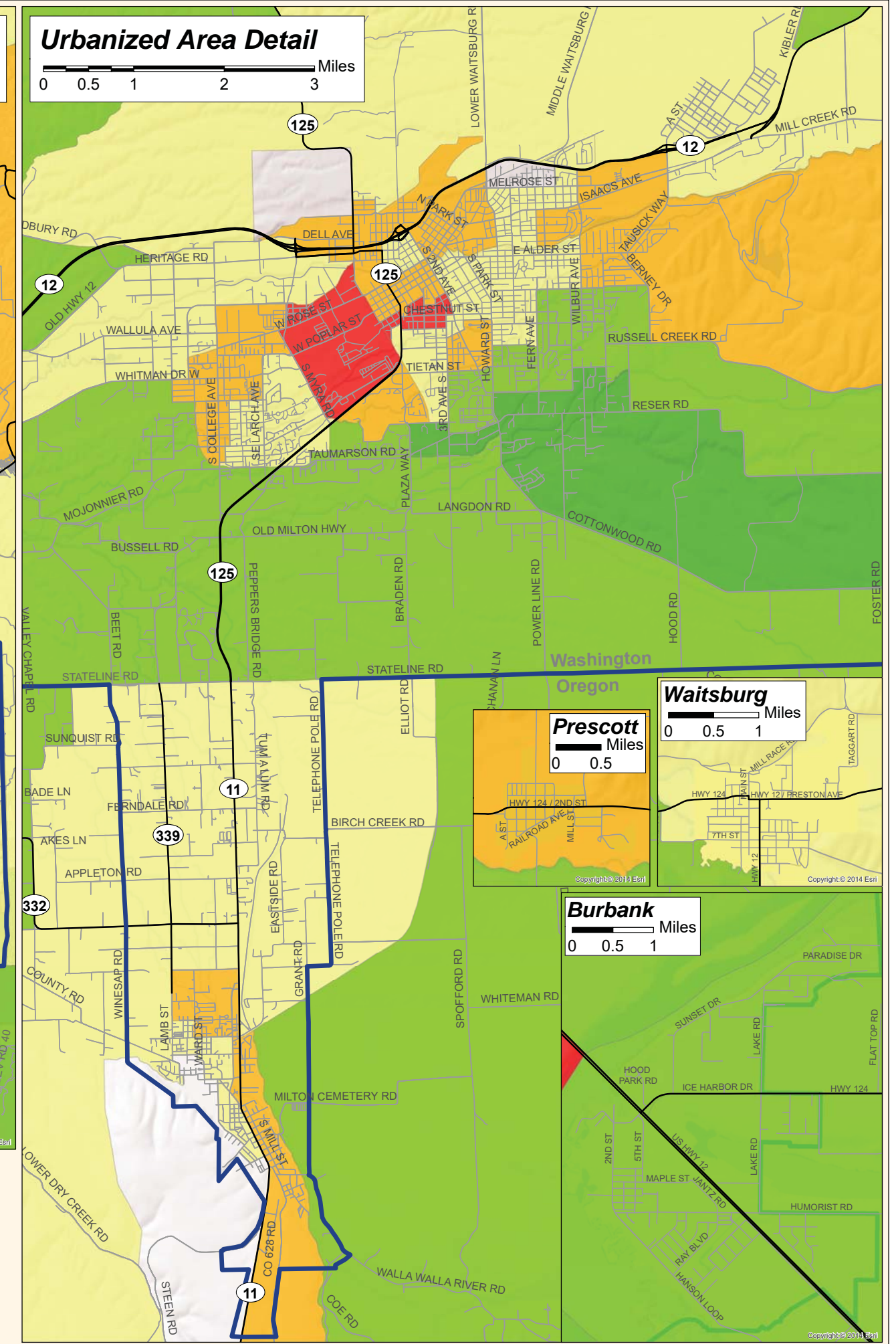


Planning Area Overview

0 1.5 3 6 9 12 Miles

Urbanized Area Detail

0 0.5 1 2 3 Miles



Walla Walla

0 0.5 1 Miles

Prescott

0 0.5 Miles

Burbank

0 0.5 1 Miles



Drawn By: Walla Walla Valley Metropolitan Planning Organization/
Sub-Regional Transportation Planning Organization

Date: June 2018

Data: 2012-2016 5-yr American Community Survey -- Table B19013

Disclaimer: WWVMPO/SRTPO Map Disclaimer applies.
Refer to <http://wwwvmppo.org/documents--maps.html>

