

Walla Walla Valley
Metropolitan and Sub-Regional
Transportation Planning Organization

2040 Plan

Preserve and improve the safety, connectivity, and efficiency of our transportation system, and provide mobility options for all users to enhance quality of life and to be consistent with community character.

What is the 2040 Plan?

The 2040 Plan guides **regional multi-million dollar investments** into all modes of transportation - roadway, pedestrian, bicycle, public, and freight transportation.

The purpose of the plan is to ensure that transportation investments in our area enhance the movement of people and freight efficiently, effectively, and safely.

Without the plan, federal transportation funding could not be allocated. The 2040 Plan is financially feasible, multi-modal, and project specific; and considers public feedback, environmental justice, and environmental impacts. The plan examines current transportation infrastructure, services, and deficiencies; and forecasts the region's growth and anticipated transportation needs **over the next 25 years.**

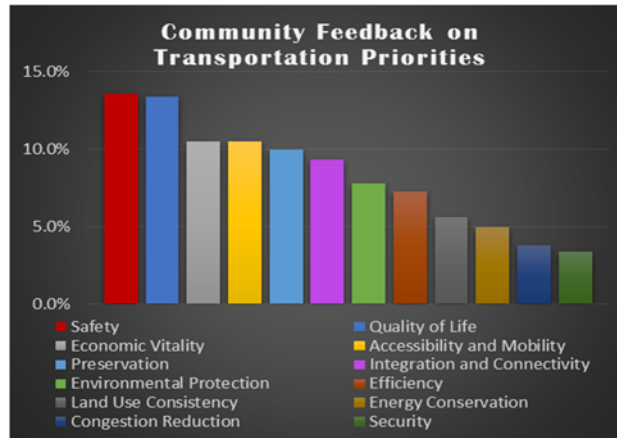
The full plan is available at www.mpo.org/2040-plan.html

What does the MPO/SRTPO do?

The Walla Walla Valley Metropolitan and Sub-Regional Transportation Planning Organization (MPO/SRTPO) is a federally-designated and state-recognized agency **responsible for coordinating regional transportation investments** in the Walla Walla-College Place-Milton-Freewater urbanized area and portions of Umatilla and Walla Walla County.



The study area encompasses 1,300 square miles and straddles the Oregon and Washington State line.



Our Regional Transportation Goals

- Safety
- System Preservation
- Quality of Life
- Economic Vitality
- Regional Connectivity
- Connectivity and Continuity
- Efficiency - Connections, Accessibility, and Operations
- Distinct Community Character
- Funding for Maintenance and Improvements



Here are the Policy Recommendations!

(Refer to the full [2040 Plan](#) for the complete list of recommendations.)

Pedestrian and Bicycle

- Conduct a regional bicycle and pedestrian study.
- Make streets and intersections safer.
- Improve maintenance of bike routes and sidewalks.
- Improve connectivity to major destinations.
- Promote the retrofitting of existing roadways.

Public Transportation

- Improve service overlap and provider coordination.
- Conduct a regional transit study.
- Increase transit accessibility and connectivity for pedestrians and cyclists.
- Improve public awareness of available service.
- Extend service hours.
- Increase transportation options to and from the airport.

Intermodal Freight and Interregional Passenger Transport

- Establish Myra Road as a primary truck route.
- Discourage freight truck traffic on non-freight routes.
- Continue the Grain Train program.
- Seek funding to complete the widening of U.S. 12.

Roadway

- Increase maintenance of existing roads and bridges.
- Increase safety and prevent loss of life.
- Update the Long-Term Arterial Plan.
- Support a Context Sensitive Solutions approach.

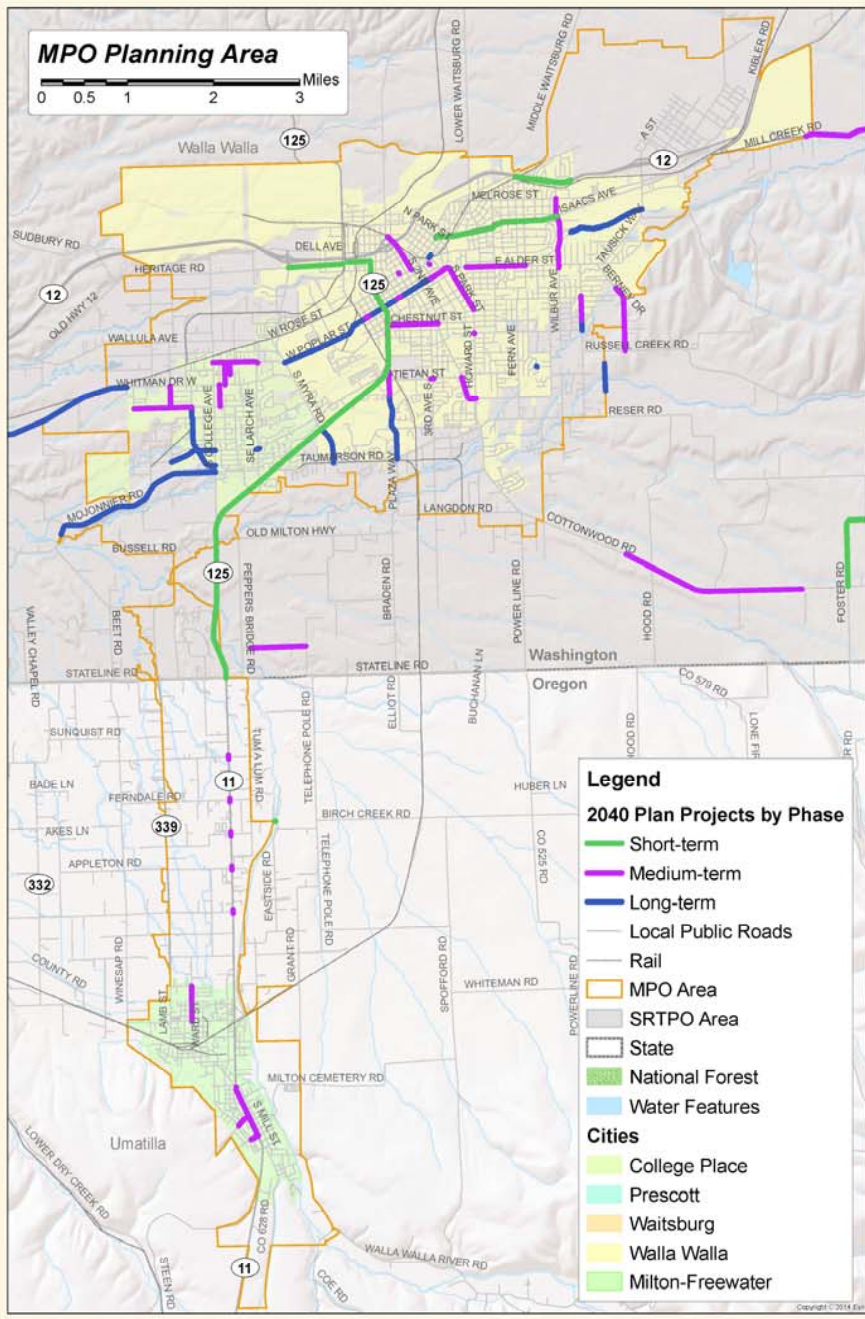
Maintenance and Operations

- Consider cost-effective Travel Demand Management and Transportation System Management & Operations strategies.
- Give funding preference to projects that incorporate management and operations strategies.

Safety and Security

- Identify and implement State Highway Safety Plan strategies.
- Give funding preference to projects that incorporate safety improvements.
- Assess the most significant threats, high-potential targets, and least hardened infrastructure elements.
- Participate in reviews and updates of emergency management plans.

MPO Planning Area

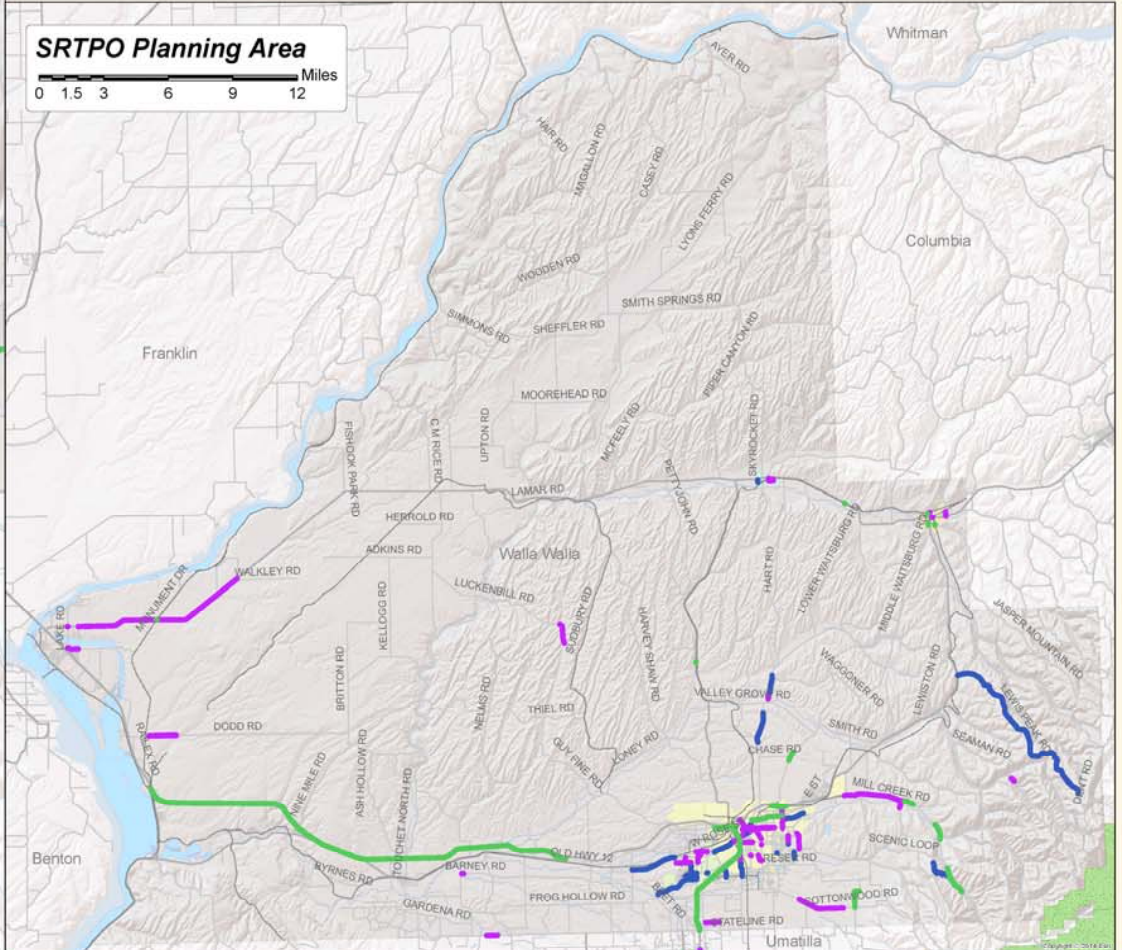


- Legend**
- 2040 Plan Projects by Phase
 - Short-term
 - Medium-term
 - Long-term
 - Local Public Roads
 - Rail
 - MPO Area
 - SRTPO Area
 - State
 - National Forest
 - Water Features
 - Cities
 - College Place
 - Prescott
 - Waitsburg
 - Walla Walla
 - Milton-Freewater

Here are the Project Recommendations!

WVWMPPO/SRTPO
2040 Plan
Planned Projects by Phase

SRTPO Planning Area



Drawn By: Walla Walla Valley Metropolitan Planning Organization/
Sub-Regional Transportation Planning Organization

Date: December 2015

Disclaimer: WVWMPPO/SRTPO Map Disclaimer applies.
Refer to <http://wvwmpo.org/documents--maps.html>



89 miles of improved roadways - 35 miles of pedestrian and bicycle improvements - 3 new and 98 replacement transit vehicles and more.

Determination of Highest Priorities

The 2040 Plan includes **population and employment forecasts** and an **inventory** of the transportation infrastructure and services for each mode of travel - **roadway, pedestrian, bicycle, public transportation, and freight** - to determine existing and projected travel demand, and identify **unmet transportation needs**.

Potential **environmental justice** and **environmental impacts** were also analyzed.

Fiscal Constraint

As only **limited funding** is available for implementation, a clear process for **project prioritization** and selection was established to make sure that the projects proposed for inclusion in the 2040 Plan provide the greatest transportation benefit to the region.

An estimated **\$794 million** will be available through 2040 for the basic maintenance of existing infrastructure and the implementation of **117 roadway, pedestrian, and bicycle as well as 44 transit improvements**.

Illustrative Vision

326 projects were originally submitted for inclusion in the plan. **165 projects remain unfunded** and can only be implemented if additional funding is identified... and an **additional \$360.7 million of funding is needed for better maintenance**.

We got your feedback!

The **public comment period** for the draft Walla Walla Valley Metropolitan and Regional Transportation – 2040 Plan took place from **January 7 through February 3, 2016**.

All comments from the public, committee members, or local organizations, positive or negative, were considered and included in the final **2040 Plan**, prior to its **adoption** by the MPO/SRTPO Policy Board on **March 2, 2016**.

Our Planning Team & Partners

We would like to thank our Planning Team and all Partner Agencies:

- City of College Place
- City of Milton-Freewater
- City of Prescott
- City of Waitsburg
- City of Walla Walla
- Port of Walla Walla
- Valley Transit
- Umatilla County
- Walla Walla County
- Oregon Department of Transportation
- Washington State Department of Transportation
- Confederated Tribes of the Umatilla Indian Reservation
- Federal Highway Administration
- Federal Transit Administration

Questions? Need more info? Contact us!

107 S 3rd Avenue
Walla Walla, WA

Phone: 509-876-8001

Fax: 509-876-8003

Website: www.mpo.org